

How to Order?

Series No.	Cushion Type	Type No.	Bore	X	Stroke	Adjustable stroke	Magnet No.	Seal material	Mounting type	Thread type
	C: Air cushion	32	25	10	Blank: No Magnet S: With Magnet		Blank: No CA CB CR LB FA FB	Blank: TPU seal	Blank: No IJ YJ YCJ BJ FD	Blank: G P: PT T: NPT
FVB: Square type barrel FXB: X type barrel		40 50 63 80	50 75 ...	20 30 40 50 75 100						
		Blank: Basic type D: Double shaft type J: Double shaft and adjustable stroke type								

Order Example:
 FVBC series, double shaft air cylinder, Bore 40mm, stroke 50mm, with magnet, TPU seal material, CA mounting accessory, NPT thread.
 ERP code is: FVBCD 40X50-S-CA-T
 Note: If cylinder with several different mounting accessories, please use this sequential coding: CA/CB/CR/LB/FA/FB/IJ/YJ/BJ/FD

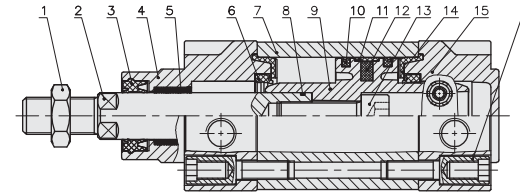
Specifications

Bore Size (mm)	32	40	50	63	80	100
Acting type	Double Acting					
Working medium	Clean Air(40 μm filtration)					
Working pressure (MPa)	0.1-1.0					
Guaranteed pressure (MPa)	1.5					
Working temperature (°C)	-20~80(Dry air)					
Speed range (mm/s)	50-800					
Cushion type	Adjustable Cushion					
Cushion stroke (mm)	27		30			36
Mounting type	LB FA FB CA CB CR					
Port size	G1/8	G1/4	G3/8			G1/2

① NPT, PT port size is optional.

Bore (mm)	Standard stroke (mm)																Max. stroke (mm)					
32	25	50	75	80	100	125	150	160	175	200	250	300	350	400	450	500	2000					
40	25	50	75	80	100	125	150	160	175	200	250	300	350	400	450	500	600	700	800	2000		
50-100	25	50	75	80	100	125	150	160	175	200	250	300	350	400	450	500	600	700	800	900	1000	2000

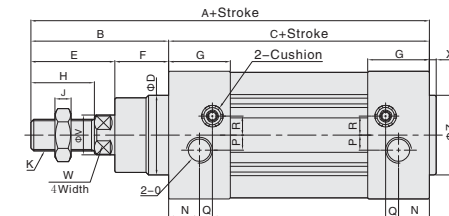
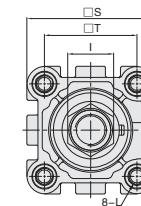
Internal Structure



NO.	Part name	Material
1	Nut	Carbon steel
2	Piston rod	S45C hard chrome carbon steel
3	Piston rod seal	TPU
4	Head cover	Aluminum alloy
5	Self lubricating bearing	Bronze powder
6	Cushion seal	TPU
7	Barrel	Aluminum alloy
8	O-ring	NBR
9	Piston	Aluminum alloy
10	Piston seal	TPU
11	Wear ring	PTFE
12	Magnet	Plastic
13	Hexagon screw	Carbon steel
14	Cushion pad	TPU
15	Rear cover	Aluminum alloy
16	Bolt	Carbon steel

Main dimensions

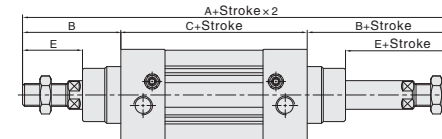
FVBC



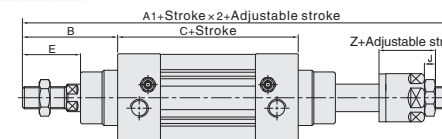
Bore/Sign	A	B	C	D	E	F	G	H	I	J	K	L	N	O	P	Q	R	S	T	V	W	X	Z
32	142	48	94	30	29	19	27.5	22	17	6	M10x1.25	M6	13	1/8"	5.5	6	6	46.5	32.5	12	10	3	30
40	159	54	105	35	33	21	32	24	17	7	M12x1.25	M6	17	1/4"	6	7.5	8.5	54	38	16	13	3.5	35
50	175	69	106	40	42	27	31	32	23	8	M16x1.5	M8	15.5	1/4"	7.5	6.5	9.5	64	46.5	20	17	3.5	40
63	190	69	121	45	42	27	33	32	23	8	M16x1.5	M8	16.5	3/8"	7.5	7.5	11.5	75	56.5	20	17	4	45
80	214	86	128	45	53	33	33	40	26	10	M20x1.5	M10	16.5	3/8"	8	8.5	12.5	93	72	25	22	4	45
100	229	91	138	55	55	36	37	40	26	10	M20x1.5	M10	19.5	1/2"	10	7	12	110	89	25	22	4	55

Note: With magnet and without magnet, the dimensions are the same.

FVBCD



FVBCJ

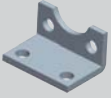


Bore/Sign	A	A1	B	C	E	Z	J	K
32	190	188	48	94	29	27	6	M10x1.25
40	213	208	54	105	33	28	7	M12x1.25
50	244	233	69	106	42	31	8	M16x1.5
63	259	248	69	121	42	31	8	M16x1.5
80	300	286	86	128	53	39	10	M20x1.5
100	320	304	91	138	55	39	10	M20x1.5

Note: 1. With magnet and without magnet, the dimensions are the same.
 2. Not marked dimension is same as FVBC standard type.
 3. FXBC series dimensions is same as FVBC.

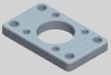
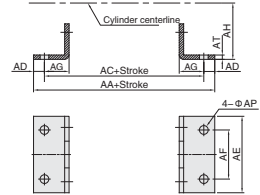
Dimension of Mounting Accessories

1



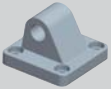
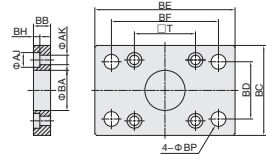
Dimension of LB type

Model/Sign	AA	AC	AD	AE	AF	AG	AH	AP	AT
FJ-VBC32LB	158	142	8	47	32	24	32	7	4
FJ-VBC40LB	179	161	9	53	36	28	36	9	4
FJ-VBC50LB	190	170	10	65	45	32	45	9	5
FJ-VBC63LB	209	185	12	75	50	32	50	9	5
FJ-VBC80LB	248	210	19	95	63	41	63	12.5	6
FJ-VBC100LB	258	220	19	115	75	41	71	14.5	6



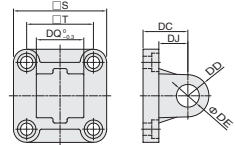
Dimension of FA/FB type

Model/Sign	AJ	AK	BA	BB	BC	BD	BE	BF	BH	BP	T
FJ-VBC32FA	11	7	30.5	10	47	32	80	64	4.5	7	32.5
FJ-VBC40FA	11	7	35.5	10	53	36	90	72	4.5	9	38
FJ-VBC50FA	14	9	40.5	12	65	45	110	90	5.5	9	46.5
FJ-VBC63FA	14	9	45.5	12	75	50	125	100	5.5	9	56.5
FJ-VBC80FA	17	11	45.5	16	95	63	154	126	7	12.5	72
FJ-VBC100FA	17	11	55.5	16	115	75	186	150	7	14.5	89



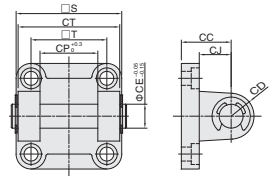
Dimension of CA type

Model/Sign	S	T	DC	DD	DE	DJ	DQ
FJ-VBC32CA	47	32.5	22	9	10	13	25.8
FJ-VBC40CA	53	38	25	12	12	16	27.8
FJ-VBC50CA	65	46.5	27	12	12	17	31.8
FJ-VBC63CA	75	56.5	32	15	16	22	39.7
FJ-VBC80CA	95	72	36	15	16	22	49.7
FJ-VBC100CA	115	89	41	20	20	27	59.7



Dimension of CB type

Model/Sign	CC	CD	CE	CJ	CP	CT	S	T
FJ-VBC32CB	22	9	10	13	26	45	47	32.5
FJ-VBC40CB	25	12	12	16	28	52	53	38
FJ-VBC50CB	27	12	12	17	32	60	65	46.5
FJ-VBC63CB	32	15	16	22	40	70	75	56.5
FJ-VBC80CB	36	15	16	22	50	90	95	72
FJ-VBC100CB	41	20	20	27	60	110	115	89



Dimensions of CR type

Model/Sign	S	T	DC	DD	DE	DF	DJ	DQ	DM	DN
FJ-VBC32CR	51	38	32	10	10	21	8	25.8	31	18
FJ-VBC40CR	54	41	36	11	12	24	10	27.8	35	22
FJ-VBC50CR	65	50	45	13	12	33	12	31.8	45	30
FJ-VBC63CR	67	52	50	15	16	37	12	39.7	50	35
FJ-VBC80CR	86	66	63	15	16	47	14	49.7	60	40
FJ-VBC100CR	96	76	71	19	20	55	15	59.7	70	50

